

Weekly update of indicators of COVID-19 community spread for schools
August 13, 2020

This document is intended to assist school districts in determining the level of in-person education that they will offer. It is released every Thursday, using data for the previous Sunday through Saturday.

Leading and secondary indicators of COVID-19 infection levels				
	Leading Indicator	Secondary Indicators		
Risk Level	New COVID-19 cases per 100,000 population per day	Percent test positivity	New COVID-19 hospitalizations per 100,000 population per day	Percent COVID-19-like illness hospital ED visits
Low Favors more in- person learning	<10	Trending down to flat No statistically significant changes		
Moderate Favors hybrid learning	10–25	Trending flat to upward Any statistically significant changes		
High Favors remote learning	>25	Trending upward Consistent statistically significant changes upward		

Leading and secondary indicators of COVID-19 infection levels by county¹				
	Leading Indicator²	Secondary Indicators³		
County	New COVID-19 cases per 100,000 population per day	Percent test positivity	New COVID-19 hospitalizations per 100,000 population per day⁴	Percent COVID-19-like illness hospital ED visits⁵
Connecticut	1.8	0.9%	0.5	1.1%
Fairfield	2.6	1.4%	0.5	1.8%
Hartford	1.3	0.8%	0.4	0.5%
Litchfield	0.5	0.2%	0.1	1.1%
Middlesex	1.3	0.6%	1.0	1.0%
New Haven	1.8	0.9%	0.6	1.7%
New London	1.1	0.8%	0.3	1.1%
Tolland	0.3	0.3%	0.0	0.4%
Windham	2.3	1.3%	0.0	0.4%

¹Data represent daily averages for August 2-8 by date of specimen collection (cases and positivity), date of hospital admission, or date of ED visit. Metrics are based on data available on Wednesday, August 12, at 8:30 pm. All data are preliminary.

²Data are color coded based on average number of new cases: yellow (<10 cases per 100,000 per day), orange (10–<25 cases per 100,000 per day), or red (25 or more cases per 100,000 per day). Cases are reported based on specimen collection date.

³Data are color coded based on trend and speed of change in secondary indicators: yellow (secondary indicators trending down to flat), orange (secondary indicators trending flat to upward), or red (secondary indicators trending upward).

⁴Hospitalization data are based on hospital location, not county of patient residence.

⁵COVID-19-like illness includes fever and cough or shortness of breath or difficulty breathing or the presence of coronavirus diagnosis code and excludes patients with influenza-like illness.

Trends in secondary indicators

Test Positivity

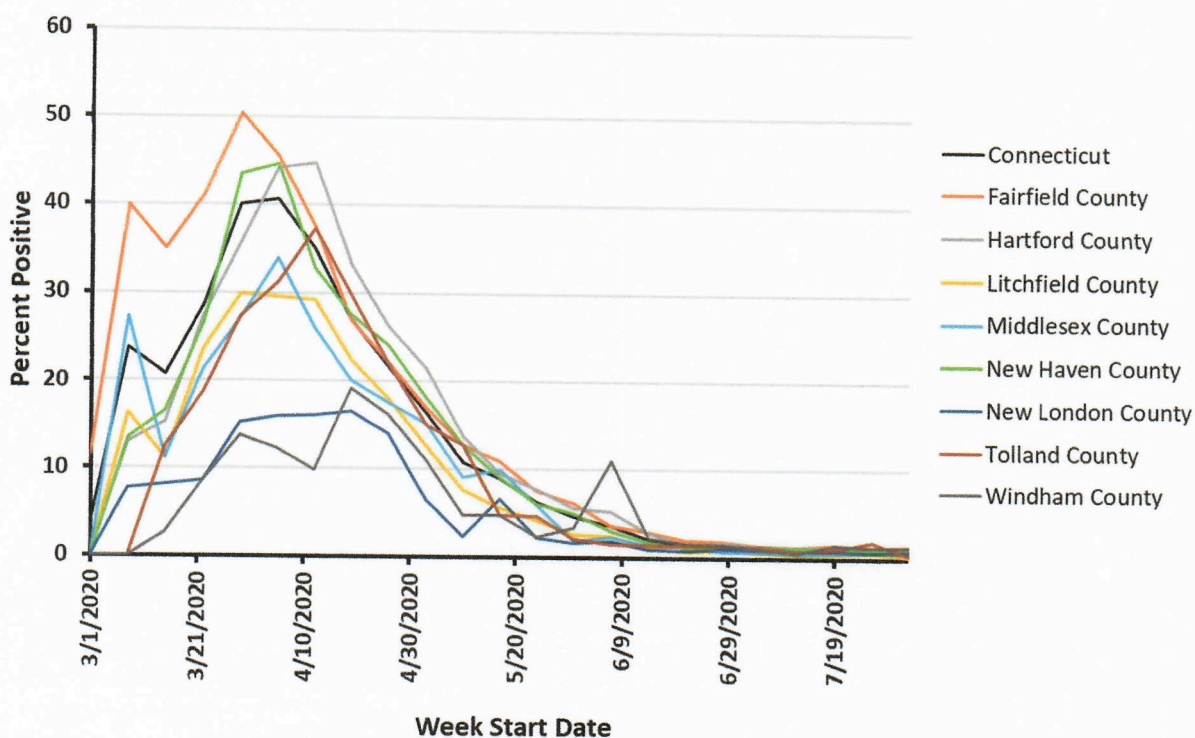
No upward or downward trends in test positivity were observed relative to recent weeks.

The national weekly test positivity for July 26–August 1, the most recent week available, was 7.8%.

- Source for national data: CDC COVID View

<https://www.cdc.gov/coronavirus/2019-ncov/covid-data/covidview/index.html>

Percentage of Positive Tests by County and Week



New Hospital Admissions

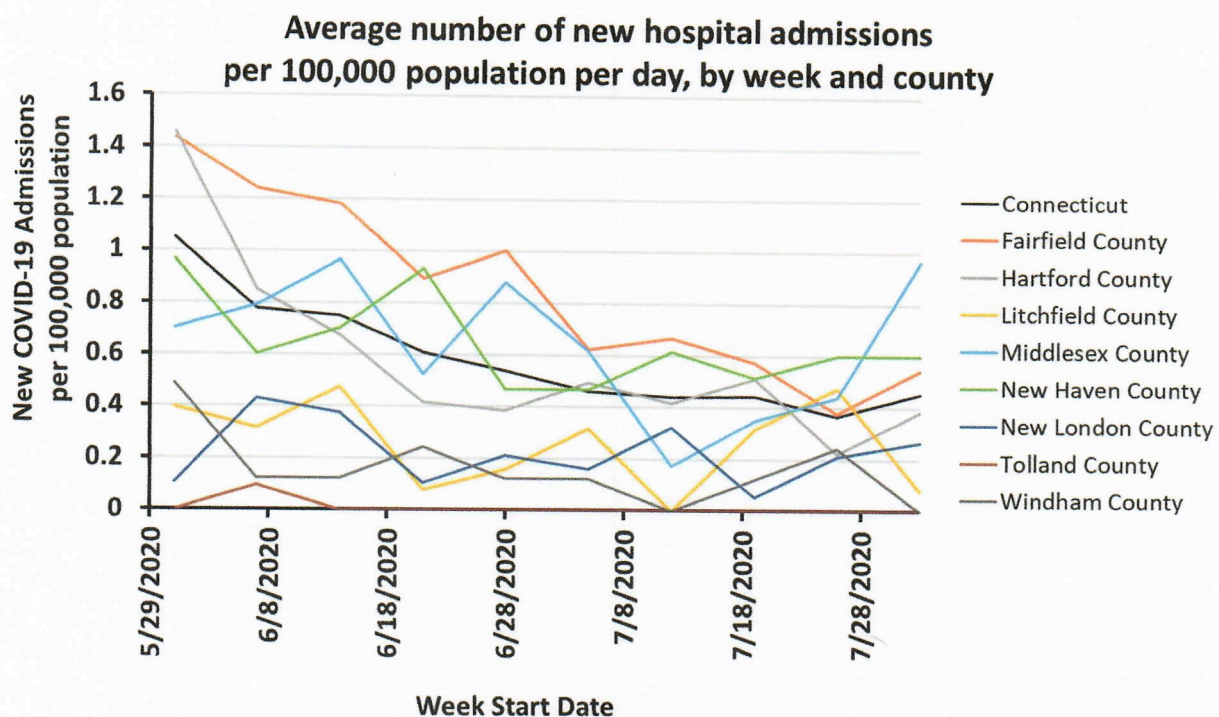
No upward or downward trends in new COVID-19 hospital admissions were observed relative to recent weeks.

The average national daily hospital admission rate for July 26–August 1, the most recent week available, was 0.6 new admissions per 100,000 population per day.

- Source for Connecticut data: Connecticut Hospital Association

- Source for national data: CDC COVID View

<https://www.cdc.gov/coronavirus/2019-ncov/covid-data/covidview/index.html>



COVID-19-like illness ED visits

No upward or downward trends in the percentage of emergency department visits for COVID-like illness were observed relative to recent weeks.

The national percentage of COVID-like illness visits for July 26–August 1, the most recent week available, was 2.9%.

- Source for national data: CDC COVID View
<https://www.cdc.gov/coronavirus/2019-ncov/covid-data/covidview/index.html>

Average Percentage (%) of ED Visits for COVID-Like Illness by County by Week

